

Nut Plate Drill Jigs

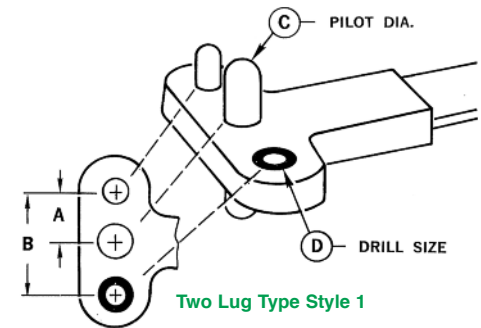
Product Details



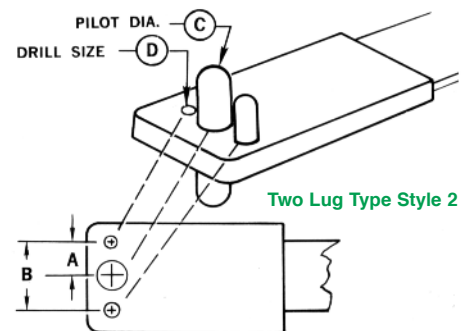
04-518-ND

- Designed for accurate drilling of rivet holes for nut plates.
- Flexible handle provides hand clearance when jig is in use.

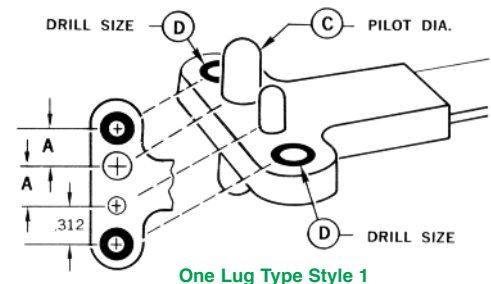
Two Lug Type Style 1					
Part No.	Bolt Ref.	'A' Dim.	'B' Dim.	Pilot Dia.	Drill Size
04-518-A	#6	.344"	.688"	.139"	#40
04-518-B	#8	.344"	.688"	.164"	#40
04-518-C	#10	.344"	.688"	.191"	#40
04-518-D	1/4"	.500"	1.000"	.248"	#40
04-518-E	5/16"	.500"	1.000"	.312"	#30
04-518-F	3/8"	.500"	1.000"	.372"	#30
04-518-M	—	.375"	.750"	.4375"	#40
04-518-N	—	.500"	1.000"	.6875"	#30
04-518-P	—	.6875"	1.375"	.811"	#30



Two Lug Type Style 2					
Part No.	Bolt Ref.	'A' Dim.	'B' Dim.	Pilot Dia.	Drill Size
04-518-NA	#4	.203"	.406"	.112"	#40
04-518-NB	#6	.218"	.436"	.139"	#40
04-518-NC	#8	.234"	.468"	.164"	#40
04-518-ND	#10	.250"	.500"	.191"	#40
04-518-NE	1/4"	.281"	.562"	.248"	#40
04-518-NF	5/16"	.3125"	.625"	.312"	#30



One Lug Type Style 1				
Part No.	Bolt Ref.	'A' Dim.	Pilot Dia.	Drill Size
04-518-G	#6	.344"	.139"	#40
04-518-H	#8	.344"	.164"	#40
04-518-J	#10	.344"	.191"	#40
04-518-K	1/4"	.344"	.248"	#40
04-518-L	#10 Sp.	.344"	.213"	#40



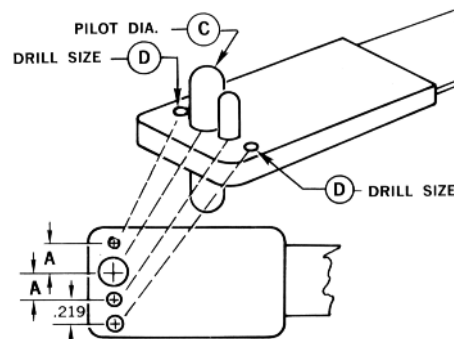
Selection continues on next page...

Toll Free Nationwide & Canada: **800-645-8180**

USATCO\U.S. AIR TOOL COMPANY, INC. WWW.USATCO.COM NEW YORK • CALIFORNIA

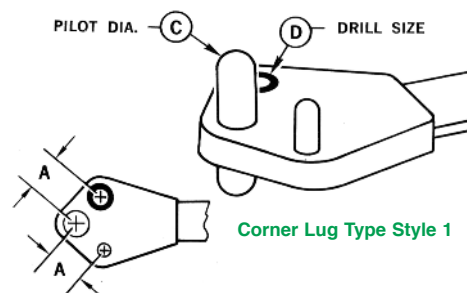
Nut Plate Drill Jigs

One Lug Type Style 2				
Part No.	Bolt Ref.	'A' Dim.	Pilot Dia.	Drill Size
04-518-PA	#4	.203"	.112"	#40
04-518-PB	#6	.218"	.139"	#40
04-518-PC	#8	.234"	.164"	#40
04-518-PD	#10	.250"	.191"	#40
04-518-PE	1/4"	.281"	.248"	#40



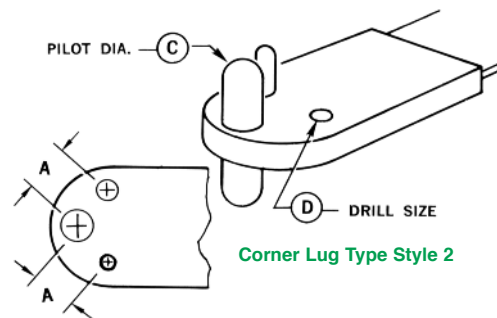
One Lug Type Style 2

Corner Type Style 1				
Part No.	Bolt Ref.	'A' Dim.	Pilot Dia.	Drill Size
04-518-R	#6	.344"	.139"	#40
04-518-S	#8	.344"	.164"	#40
04-518-T	#10	.344"	.191"	#40
04-518-U	1/4"	.500"	.248"	#40
04-518-V	5/16"	.500"	.312"	#30



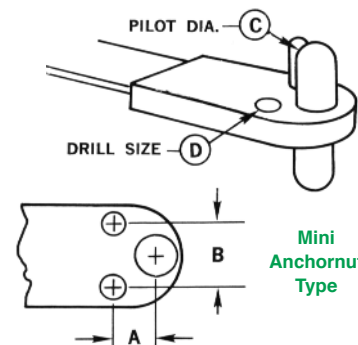
Corner Lug Type Style 1

Corner Type Style 2				
Part No.	Bolt Ref.	'A' Dim.	Pilot Dia.	Drill Size
04-518-SA	#4	.203"	.112"	#40
04-518-SB	#6	.218"	.139"	#40
04-518-SC	#8	.234"	.164"	#40
04-518-SD	#10	.250"	.191"	#40
04-518-SE	1/4"	.281"	.248"	#40



Corner Lug Type Style 2

Mini Anchornut Type					
Part No.	Bolt Ref.	'A' Dim.	'B' Dim.	Pilot Dia.	Drill Size
04-518-TA	#10	.250"	.219"	.191"	#40
04-518-TB	1/4"	.281"	.219"	.248"	#40
04-518-TC	5/16"	.312"	.250"	.312"	#30



Mini Anchornut Type

USATCO U.S. Air Tool Company, Inc.

Eastern Division60 Fleetwood Ct., Ronkonkoma, NY 11779-6907 tel: (631) 471-3300 fax: (631) 471-3308
 Western Division1219 W. Mahalo Place, Rancho Dominguez, CA 90220-5446 tel: (310) 632-5400 fax: (310) 632-3900