

H9055

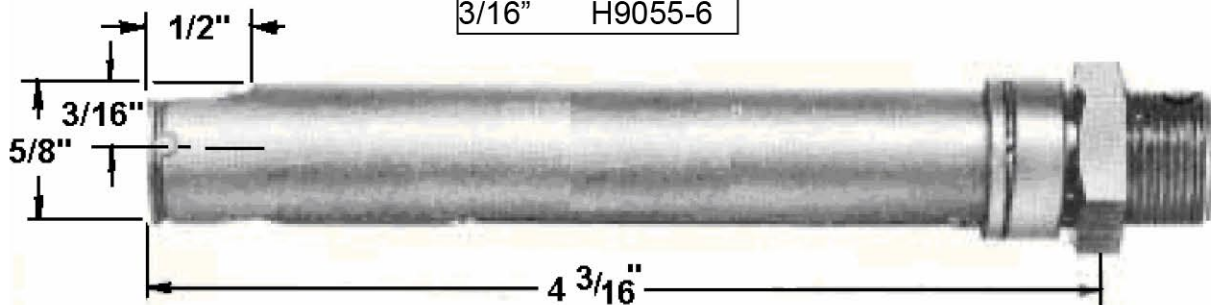
FOR CHERRYLOCK® "A" CODE RIVETS TECHNICAL DATA SHEET, Page 1 of 2



CHERRY®
AEROSPACE

DIMENSIONAL DATA

3/32"	H9055-3
1/8"	H9055-4
5/32"	H9055-5
3/16"	H9055-6



CHOICE OF RIVETERS

- These heads fit directly on the G36 and G715 Cherry® power riveters.
- For use on the Cherry G700, G784, G689 riveters use 680B46 adapter.

BEFORE USE, CHECK IF:

- The pulling head is correctly mounted and the proper riveter is selected.
- Proper air source is connected (see Riveter specification for recommended pressure).
- The tool is clean and in good working condition.

USAGE

- 3/32", 1/8", 5/32" AND 3/16" CHERRYLOCK® rivets.

NOTE: Due to limitations in power and stroke of the riveters, some materials and grip lengths may not be suitable. Please refer to the CHERRYLOCK 'A' rivet tool selection chart.

DURING OPERATION

- Inspect the active area of the Nosepiece regularly.
- Keep the tool clean, especially the Nosepiece and Jaws; pay special attention when used with sealants and adhesives.
- If stem slippage occurs, the Jaws need to be either cleaned or replaced.
- The insert (2) is subject to wear and should be inspected and replaced as deemed appropriately; worn inserts will result in improper swaging of the locking collar, excessive flash and low push-out and tensile values of the installed rivet.

USATCO U.S. Air Tool Company, Inc.

Info@usatco.com

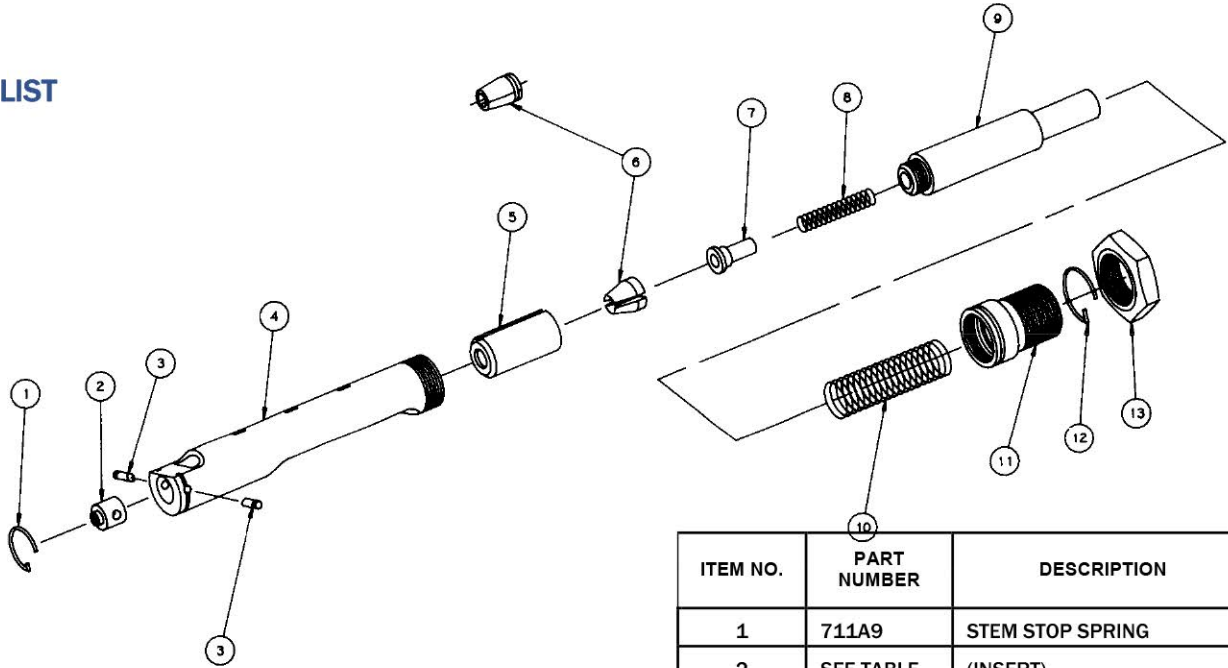
Eastern Division60 Fleetwood Ct., Ronkonkoma, NY 11779-6907 tel: (631) 471-3300 fax: (631) 471-3308
Western Division1219 W. Mahalo Place, Rancho Dominguez, CA 90220-5446 tel: (310) 632-5400 fax: (310) 632-3900

H9055

FOR CHERRYLOCK® "A" CODE RIVETS

TECHNICAL DATA SHEET, Page 2 of 2

PARTS LIST



DESCRIPTION AND SIZE TABLE				
ITEM NO.	PART NO.			
	H9055-3	H9055-4	H9055-5	H9055-6
INSERT	960-023	960-024	960-025	960-026
STEM STOP	712A10-1	712A10-2	712A10-4	712A10-5
JAW SET	711B6-3	711B6-4	711B6-5	711B6-6

ITEM NO.	PART NUMBER	DESCRIPTION	QTY. REQ'D.
1	711A9	STEM STOP SPRING	1
2	SEE TABLE	(INSERT)	1
3	SEE TABLE	(STEM STOP)	2
4	9055-002	SLEEVE	1
5	711B4	COLLET	1
6	SEE TABLE	(JAW PAIR SET)	1
7	711A7	JAW FOLLOWER	1
8	711A8	SPRING FOLLOWER	1
9	711B5	DRAWBOLT	1
10	P-1158	SPRING RETURN	1
11	711B12	RETAINER CAP	1
12	680A25	SPRING RETAINER CAP	1
13	G6JN	JAM NUT	1

PREVENTATIVE MAINTENANCE

- Inspect active area regularly and keep it clean, in good condition
- Clean the jaws and jaw cavity inside the collet every 1,000 installations.
- Lubricate outside configuration of the jaws with Lubriplate® or similar light grease.

LUBRIPLATE® is a registered trademark of Fiske Brothers Refining Co.

WARRANTY

Seller warrants the goods conform to applicable specifications and drawings and will be manufactured and inspected according to generally accepted practices of companies manufacturing industrial or aerospace fasteners. In the event of any breach of the foregoing warranty, Buyer's sole remedy shall be to return defective goods (after receiving authorization from Seller) for replacement or refund of the purchase price, at the Seller's option. Seller agrees to any freight costs in connection with the return of any defective goods, but any costs relating to removal of the defective or nonconforming goods or installation of replacement goods shall be Buyer's responsibility. SELLER'S WARRANTY DOES NOT APPLY WHEN ANY PHYSICAL OR CHEMICAL CHANGE IN THE FORM OF THE PRODUCT IS MADE BY BUYER. THE FOREGOING EXPRESS WARRANTY AND REMEDY ARE EXCLUSIVE AND ARE IN LIEU OF ALL OTHER WARRANTIES AND REMEDIES; ANY IMPLIED WARRANTY AS TO QUALITY, FITNESS FOR PURPOSE, OR MERCHANTABILITY IS HEREBY SPECIFICALLY DISCLAIMED AND EXCLUDED BY SELLER. This warranty is void if seller is not notified in writing of any rejection of the goods within ninety (90) days after receipt of the goods by buyer.

Seller shall not be liable under any circumstances for incidental, special or consequential damages arising in whole or in part from any breach by Seller, AND SUCH INCIDENTAL, SPECIAL, OR CONSEQUENTIAL DAMAGES ARE HEREBY EXPRESSLY EXCLUDED.

Our policy is one of continuous development. Specifications shown in this document may be subject to changes introduced after publication.

NOTE: The properties, strength, dimensions, installed characteristics and all other information in these materials are for guidance only to aid in the correct selection of the products described herein and is not intended or implied as part of the above warranty. All applications should be evaluated for functional stability and available samples of the described parts can be requested for installed tests, suitability and evaluations.

For more information please contact our Technical Services Department at tel. 714-850-6022

USATCO U.S. Air Tool Company, Inc.

Info@usatco.com

Eastern Division60 Fleetwood Ct., Ronkonkoma, NY 11779-6907 tel: (631) 471-3300 fax: (631) 471-3308

Western Division1219 W. Mahalo Place, Rancho Dominguez, CA 90220-5446 tel: (310) 632-5400 fax: (310) 632-3900