

H782



CHERRY
AEROSPACE

Universal Two Jaw Offset Pulling Head

INSTRUCTION SHEET, Page 1 of 2

DIMENSIONAL DATA (see Fig. 1)

- Stroke: up to 3/4"

Choice of Riveters

- G746A (1850 Lbs @ 90 PSI, 7/8" stroke)
 - G747 (2100 Lbs @ 90 PSI, 7/16 stroke)
 - G704B (3100 Lbs @ 90 PSI, 1/2" stroke)
 - G800 (4200 Lbs, 3/4" stroke, hand powered)
- Other riveters may be used with proper adaptors.

MOUNTING INSTRUCTIONS

- Attach riveter to an air source (except G-800)
- While holding the Carrier pushed forward, thread the pulling head onto the riveter; when threads are bottomed out, unthread up to 1 turn in order to achieve the desired operating head orientation.
- Lock into position by tightening the Jam Nut.
- Caution: Do not use thread locker on Adaptor and Jam Nut threads.

OPERATING INSTRUCTIONS

Before operating the tool, make sure that:

- Pulling Head is correctly mounted on the proper riveter
- Proper Air source is connected (see Riveter specification for recommended pressure).
- Make sure that the proper Nosepiece is used and that it is in good working condition. Use Table 1 as a guide.

Fig. 1
Dimensional Data

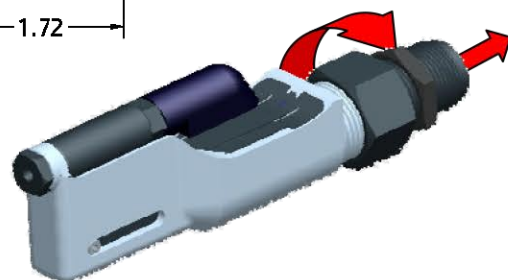
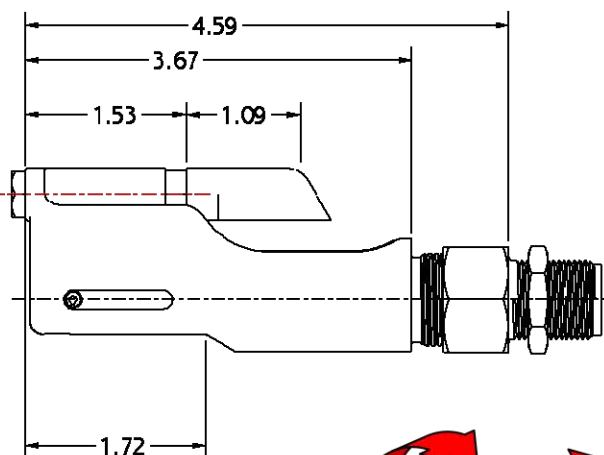
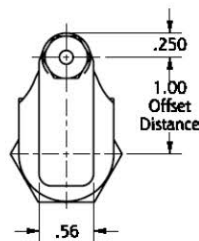
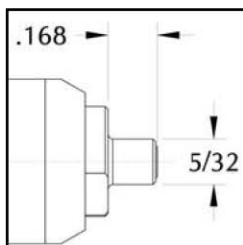


Fig. 3
782-3E
Extended Nosepiece



During Operation:

- DO NOT OPERATE WITH A DAMAGED OR MISSING DEFLECTOR, HIGH VELOCITY STEMS MAY BE EJECTED DURING OPERATION!**
- KEEP YOUR FINGERS OFF THE ACTIVE AREA, ESPECIALLY IN FRONT OF THE RETRACTED CARRIER WHEN THE TOOL IS ACTIVATED.**
- Inspect the active area of the nosepiece regularly.
- Keep the tool clean, especially the nosepiece and jaws; pay special attention when sealants and adhesives are used.
- If stem slippage occurs, clean or replace the jaws
- Should a stem get stuck, use pliers to remove it; if it is a persistent problem, inspect and replace the spring

Table 1: Nose Piece Selection Guide

Items in red, marked with an asterisk (*) are standard and are provided with the pulling head as purchased.		
JAW P/N	NOSE PIECE	INSTALLS THE FOLLOWING PRODUCTS
	*782-456	CherryMAX, CherryMAX AB: -4, -5, -6 (except 6 all aluminum)
	886-004	CherryLOCK "A" Code: -4
	886-005	CherryLOCK "A" Code: -5
*701B18	782-4NAS	NAS1900, -4 (no shift washer)
	782-5NAS	NAS1900, -5 (no shift washer)
	782-5BB	Blindbolt "U" Type: -05
	783-4MBC	Standard MBC: -4
	782-5MBC	Standard MBC: -5
	886-003	3 dia. CherryLOCK "A" Code
	782-3E	Extended 3 dia. CherryLOCK "A" Code, see figure 3
	782-3	3/32" SPR & -3 pull thru NP Rivets
	886-006	6 Dia CherryLOCK "A" Code
782-010	782-6MBC	Standard MBC: -6
	782 -6AL	CherryMAX "AB" -6 Alum, NAS1900 "U" Type -4, -5, -6
	782-6NAS	NAS1900, -6 (no shift washer)

Patent No: US 7,467,451 B2

USATCO U.S. Air Tool Company, Inc.

Eastern Division60 Fleetwood Ct., Ronkonkoma, NY 11779-6907 tel: (631) 471-3300 fax: (631) 471-3308
Western Division1219 W. Mahalo Place, Rancho Dominguez, CA 90220-5446 tel: (310) 632-5400 fax: (310) 632-3900

Info@usatco.com

H782

Universal Two Jaw Offset Pulling Head

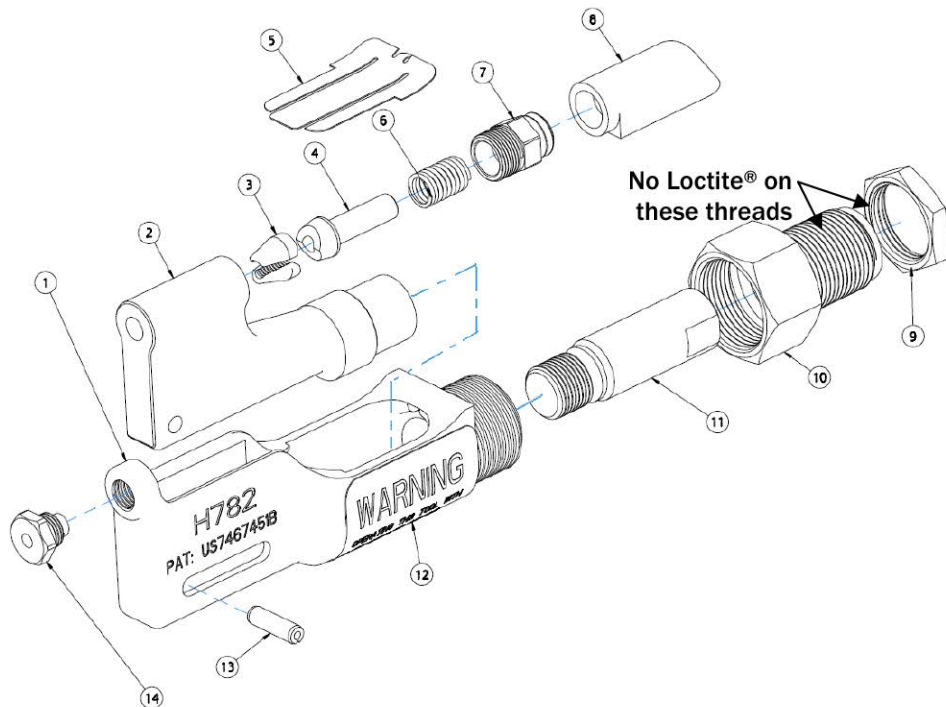
INSTRUCTION SHEET, Page 2 of 2



CHERRY
AEROSPACE

PARTS LIST

ITEM No	PART NUMBER	DESCRIPTION	QTY
1	783-051	Frame	1
2	783-052	Carrier	1
3	701B18	Jaw Set (see Table 1)	1
4	783-054	Jaw Follower	1
5	783-057	Guard	1
6	P-1428	Compression Spring	1
7	783-055	Plug	1
8	783-058	Deflector, Pin	1
9	671A16	Jam Nut	1
10	763A7	Adaptor, Frame	1
11	781B6	Adaptor, Carrier	1
12	435A60	Warning Label	1
13	P-1012	Roll Pin	1
14	782-456	Nosepiece (See Table 1)	1



* Item 14 (Nosepiece) is replaceable. See "Nosepiece Selection Table" on page 1 for a selection guide.

Item 3, to install CherryMAX AB -6 All Aluminum and CheryLOCK A-6 All Aluminum use 782-010 Jaws .

PREVENTATIVE MAINTENANCE

- Clean the nosepiece, jaw cavity and inspect jaws and spring every 500 installations or whenever a failure occurs; replace spring and jaws if worn.
- Lubricate outside configuration of the Jaws with Lubriplate® or similar light grease.
- Inspect regularly and keep active area clean and in good working condition.
- Replace worn or broken components.
- When re-assembling align the jaws with the jaw follower as shown in the exploded view (items 3 and 4); use Loctite® 242 (removable) on all threaded components except as shown.

LOCTITE® is a registered trademark of Henkel Corporation.

LUBRIPLATE® is a registered trademark of Fiske Brothers Refining Co.

WARRANTY

Seller warrants the goods conform to applicable specifications and drawings and will be manufactured and inspected according to generally accepted practices of companies manufacturing industrial or aerospace fasteners. In the event of any breach of the foregoing warranty, Buyer's sole remedy shall be to return defective goods (after receiving authorization from Seller) for replacement or refund of the purchase price, at the Seller's option. Seller agrees to any freight costs in connection with the return of any defective goods, but any costs relating to removal of the defective or nonconforming goods or installation of replacement goods shall be Buyer's responsibility. SELLER'S WARRANTY DOES NOT APPLY WHEN ANY PHYSICAL OR CHEMICAL CHANGE IN THE FORM OF THE PRODUCT IS MADE BY BUYER. THE FOREGOING EXPRESS WARRANTY AND REMEDY ARE EXCLUSIVE AND ARE IN LIEU OF ALL OTHER WARRANTIES AND REMEDIES; ANY IMPLIED WARRANTY AS TO QUALITY, FITNESS FOR PURPOSE, OR MERCHANTABILITY IS HEREBY SPECIFICALLY DISCLAIMED AND EXCLUDED BY SELLER. This warranty is void if seller is not notified in writing of any rejection of the goods within ninety (90) days after receipt of the goods by buyer. Seller shall not be liable under any circumstances for incidental, special or consequential damages arising in whole or in part from any breach by Seller, AND SUCH INCIDENTAL, SPECIAL, OR CONSEQUENTIAL DAMAGES ARE HEREBY EXPRESSLY EXCLUDED. Our policy is one of continuous development. Specifications shown in this document may be subject to changes introduced after publication. NOTE: The properties, strength, dimensions, installed characteristics and all other information in these materials are for guidance only to aid in the correct selection of the products described herein and is not intended or implied as part of the above warranty. All applications should be evaluated for functional stability and available samples of the described parts can be requested for installed tests, suitability and evaluations.

Patent No: US 7,467,451 B2

USATCO U.S. Air Tool Company, Inc.

Eastern Division60 Fleetwood Ct., Ronkonkoma, NY 11779-6907 tel: (631) 471-3300 fax: (631) 471-3308

Western Division1219 W. Mahalo Place, Rancho Dominguez, CA 90220-5446 tel: (310) 632-5400 fax: (310) 632-3900

Info@usatco.com