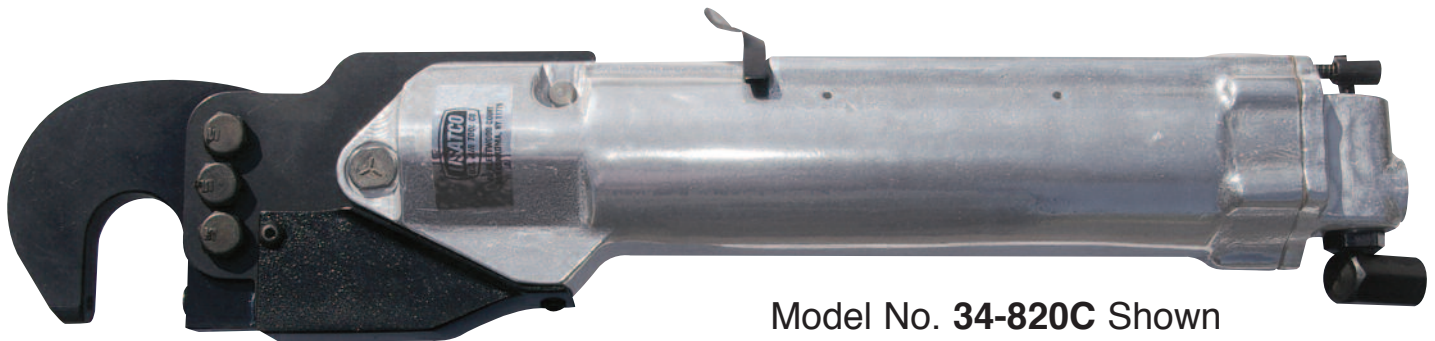


34-820C Tri-Cylinder C-Yoke Compression Riveter Parts List



Model No. **34-820C** Shown

- More power than our tandem series.
- Full squeeze force at only 90 PSI.
- Heavy-duty bearings & shafts.
- Throttle control allows precise rivet installation.
- Accepts standard 3/16" tooling.
- Includes swivel air inlet.
- Well balanced.
- Furnished with safety backend.

Please Note

Due to very high squeezing pressures developed by this tool, use heavy duty bearings only. The use of standard bearings will cause damage to the tool and possible injury to the operator. Operate this tool at 90 PSI (6.2 bar).

Toll Free Nationwide & Canada: **800-645-8180**

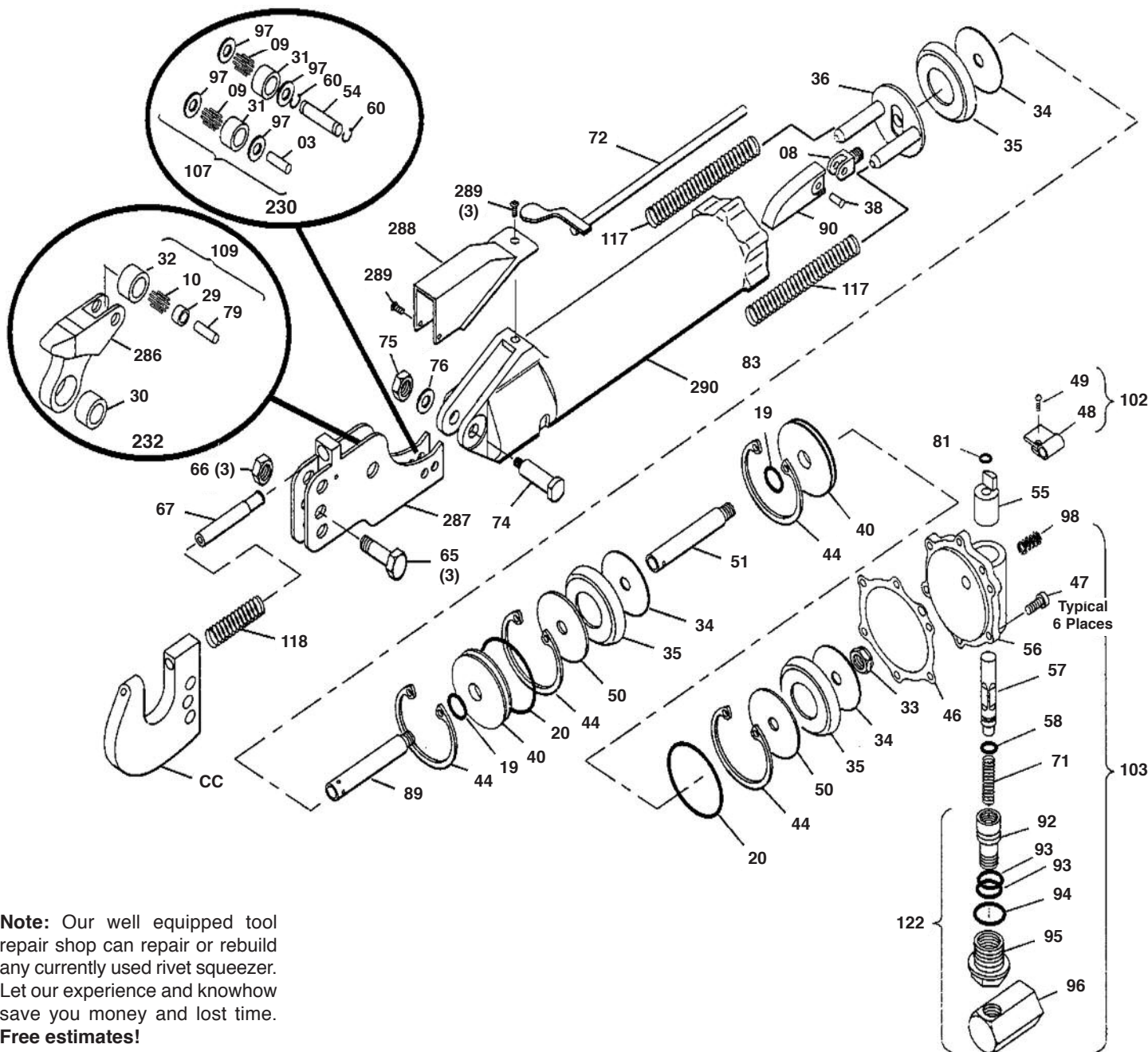
USATCO\U.S. AIR TOOL COMPANY, INC. www.USATCO.COM NEW YORK • CALIFORNIA

Rev0515

34-820C Tri-Cylinder C-Yoke Compression Riveter

| Model Number | Capacity Cold Rivet Diameter | | Standard Yoke Dimensions | | | Max. Force @ 90 PSI | Set Holding Plunger | | Net Weight | Overall Length | Air Inlet Thread Size | Gap | Set Hole Size |
|--------------|------------------------------|-------|--------------------------|---------------|-----------------|---------------------|---------------------|---------------------|------------|----------------|-----------------------|--------|---------------|
| | Alum. | Steel | Reach | Closed Height | C-Yoke Part No. | | Max. Travel | Stroke @ Max. Force | | | | | |
| 34-820C | 1/4" | 3/16" | 1-1/2" | 11/16" | 38-C15 | 9000 lbs | 9/16" | 1/16" | 8.50 lbs | 18-3/4" | 1/4" | 1-1/4" | 3/16" |

Note: The table above details the included C-Yoke which is suitable for most applications. USATCO also offers many other C-Yokes designed for more specific applications, please inquire. USATCO can also fabricate custom yoke designs, please submit a blueprint or sample of your riveting problem for quote.



Note: Our well equipped tool repair shop can repair or rebuild any currently used rivet squeezer. Let our experience and knowhow save you money and lost time. **Free estimates!**

USATCO U.S. Air Tool Company, Inc.

Eastern Division60 Fleetwood Ct., Ronkonkoma, NY 11779-6907 tel: (631) 471-3300 fax: (631) 471-3308
 Western Division1219 W. Mahalo Place, Rancho Dominguez, CA 90220-5446 tel: (310) 632-5400 fax: (310) 632-3900

| Index Number | Part Number | Part Description | Quantity |
|--------------|-------------|--|----------|
| 03 | 38-03AA | Roller Shaft | 1 |
| 08 | 38-08AA | Piston Fork | 1 |
| 09 | 38-09AA | Needle Roller | 40 |
| 10 | 38-10AA | Needle Roller End Bearing | 40 |
| 19 | 38-19AA | "O" Ring | 2 |
| 20 | 38-20AA | "O" Ring | 2 |
| 29 | 38-29AA | Inner Race End Bearing | 1 |
| 30 | 38-30AA | Pivot Bearing | 1 |
| 31 | 38-31AA | Stationary Roller Plate | 2 |
| 32 | 38-32AA | Outer Race End Bearing | 1 |
| 33 | 38-33AA | Piston Rod Nut | 1 |
| 34 | 38-34AA | Piston Leather Plate | 3 |
| 35 | 38-35AA | Piston Leather | 3 |
| 36 | 38-36AA | Piston | 1 |
| 38 | 38-38AA | Wedge Spacer Rivet | 1 |
| 40 | 38-40AA | Seperator | 2 |
| 44 | 38-44AA | Retaining Ring | 4 |
| 46 | 38-46AA | Cylinder Head Gasket | 1 |
| 47 | 38-47AA | Allen Cap Screw | 6 |
| 48 | 38-48AA | Lever Arm | 1 |
| 49 | 38-49AA | Screw | 1 |
| 50 | 38-50AA | Tandem Piston | 2 |
| 51 | 38-51AA | Piston Rod | 1 |
| 54 | 38-54AA | Roller Shaft | 1 |
| 55 | 38-55AA | Throttle Valve Bushing | 1 |
| 56 | 38-56AA | Cylinder Head | 1 |
| 57 | 38-57AA | Throttle Valve | 1 |
| 58 | 38-58AA | "O" Ring | 1 |
| 60 | 38-60AA | Tru-Arc Retainer Ring | 2 |
| 65 | 38-65AA | Yoke Bolt | 3 |
| 66 | 38-66AA | Yoke Bolt Nut | 3 |
| 67 | 38-67AA | Set Holder (3/16" set hole) | 1 |
| 71 | 38-71AA | Throttle Valve Spring | 1 |
| 72 | 38-72AA | Throttle Valve Lever | 1 |
| 74 | 38-74AA | Bearing Bolt | 1 |
| 75 | 38-75AA | Bearing Bolt Nut | 1 |
| 76 | 38-76AA | Bearing Bolt Washer | 1 |
| 79 | 38-79AA | End Roller Bearing Shaft | 1 |
| 81 | 38-81AA | "O" Ring (brass bushing) | 1 |
| 89 | 38-89AA | Piston Rod | 1 |
| 90 | 38-90AA | Wedge Long "A" | 1 |
| 92 | 38-92AA | Swivel | 1 |
| 93 | 38-93AA | "O" Ring | 2 |
| 94 | 38-94AA | "O" Ring | 1 |
| 95 | 38-95AA | Swivel Nut | 1 |
| 96 | 38-96AA | Elbow | 1 |
| 97 | 38-97AA | Thrust Washer | 4 |
| 98 | 38-98AA | Spring | 1 |
| 102 | 38-102AA | Lever Arm Assembly (includes index 48 & 49) | 1 |
| 107 | 38-107AA | Plate Roller Assembly (includes index 31, 09 & 97) | 1 |
| 109 | 38-109AA | Moving Jaw End Bearing Ass'y (incl. index 32, 10 & 29) | 1 |
| 117 | 38-117AA | Piston Return Spring | 2 |

| Index Number | Part Number | Part Description | Quantity |
|--------------|-------------|--|----------|
| 118 | 38-118AA | Spring | 1 |
| 122 | 38-122AA | Swivel Assembly (includes index 92, 93, 94, 95 & 96) | 1 |
| 230 | 38-230AA | Roller Assembly (includes index 107, 54, 03 & 60) | 1 |
| 232 | 38-232AA | Set Holder Lever Assembly (includes index 109, 286 & 30) | 1 |
| 286 | 38-286AA | Lever | 1 |
| 287 | 38-287AA | Yoke Plate | 1 |
| 288 | 38-288AA | Cover Guard | 1 |
| 289 | 38-289AA | Guard Screw | 1 |
| 290 | 38-290AA | Cylinder | 1 |
| CC | 38-C15 | C-Yoke, Standard | 1 |

Rivet Squeezer Set Kit



Kit Includes:

4 Universal AN470 Sets (1/8" body length: 3/32", 1/8", 5/32" & 3/16"), 6 Universal AN470 Sets (1/4" body length: 1/16", 3/32", 1/8", 5/32", 3/16" & 1/4"), 4 Round AN430 Sets (1/16", 3/32", 1/8" & 5/32"), 1 Flat AN442 Set (1/4" body length: 3/32"), 4 Flush Sets with 3/8" Diameter (1 each: 1/8", 1/4", 3/8" & 1/2" body length), 4 Flush Sets with 1/2" Diameter (1 each: 1/8", 1/4", 3/8" & 1/2" body length), Soft Blank Set (1/4" body length), Shim Post Holder, 6 Spacer Shims (2 each: 1/64", 1/32" & 1/16"), Metal Kit Box

| Part Number | Description |
|-------------|--------------------------|
| 53-26 | 31 PC Set Assortment Kit |