

H702-3NPR

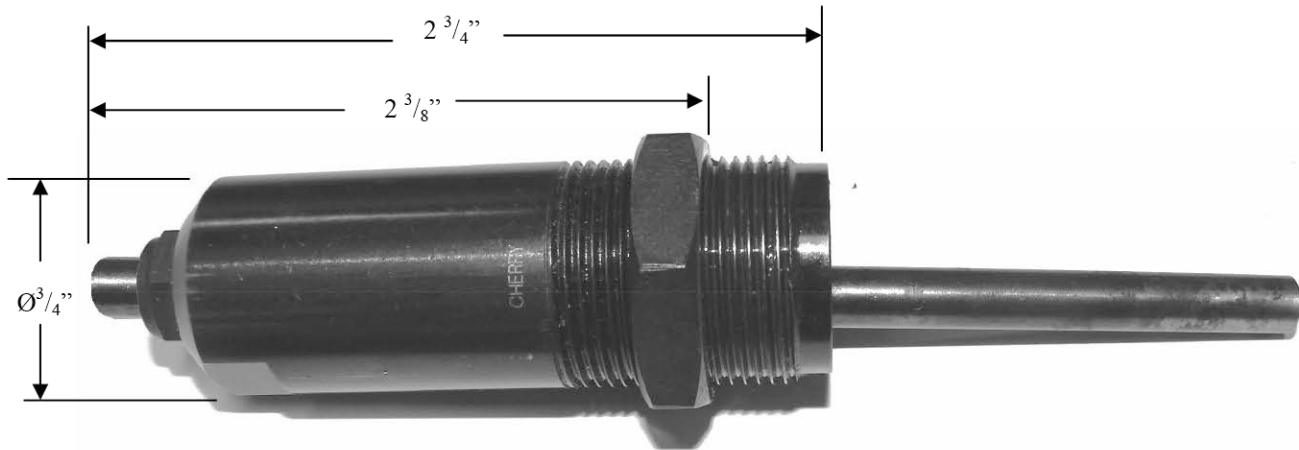
CHERRY® Nut-Plate Rivet Pulling Head

INSTRUCTION SHEET, Page 1 of 2



DIMENSIONAL DATA

(see figure below)



RIVET SIZE CAPABILITY

- The H702-3NPR Pulling Head is capable of installing 3/32" CHERRY® nut-plate rivets.
- The pulling head is provided with an extra nose piece for installing 1/8" CHERRY® nut-plate rivets.

CHOICE OF RIVETERS

The H702 Pulling Head fits directly on the G702 and G702A CHERRY® Riveters.

OPERATING INSTRUCTIONS

Before using this pulling head, make sure that:

- Pulling Head is correctly mounted on the proper riveter
- Proper Air source is connected (see Riveter specification for recommended pressure).
- Make sure that the proper Nosepiece is used and that it is in good working condition. Use the "Nosepiece Selection Table" as a guide.

USATCO U.S. Air Tool Company, Inc.

Info@usatco.com

Eastern Division60 Fleetwood Ct., Ronkonkoma, NY 11779-6907 tel: (631) 471-3300 fax: (631) 471-3308

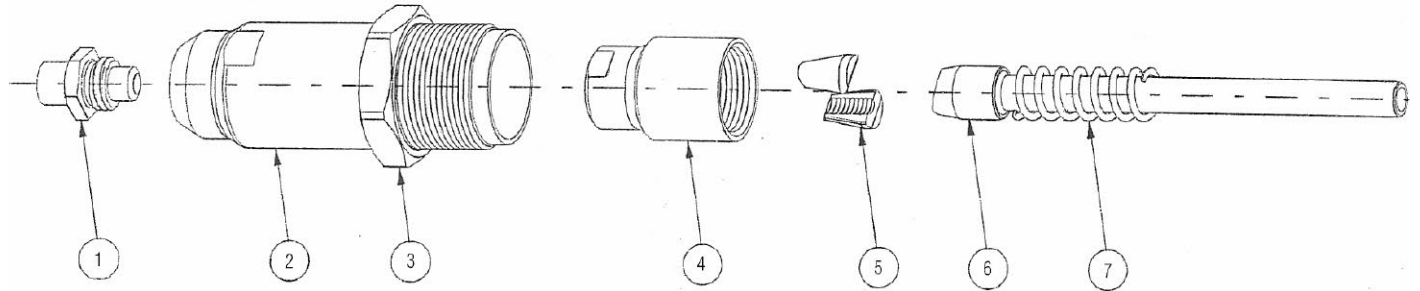
Western Division1219 W. Mahalo Place, Rancho Dominguez, CA 90220-5446 tel: (310) 632-5400 fax: (310) 632-3900

H702-3NPR

CHERRY® Nut-Plate Rivet Pulling Head

INSTRUCTION SHEET, Page 2 of 2

PARTS LIST



Ref	Part No.	Description	Qty
1	728A9-3	Nose Piece, 3/32"	1
	728A9-104	Nose Piece, 1/8"	1
2	702B19	Sleeve	1
3	671A16	Jam Nut	1
4	702A20	Collet	1
5	728B4	Jaws (2 pcs)	1 set
6	743A8-3NPR	Jaw Follower	1
7	732A8	Spring	1

MOUNTING INSTRUCTIONS

1. Connect tool to air supply
2. Place jaws (5) inside collet (4). Insert jaw follower (6) with spring follower (7) into the collet (4). Screw this assembly onto head piston, making sure that the tapered end of the jaw follower (5) is properly aligned in bevel in back end of jaws (5).
3. Thread nosepiece (1) completely into sleeve (2) and place this assembly over the collet and jaw assembly. Thread this assembly into the riveter while depressing trigger and tighten snugly. Tighten jam-nut (3) securely.

MAINTENANCE

These pulling heads will give long life if properly maintained.

- Keep the head clean and dry and all the parts securely tightened.
- Lubricate inside the cone of the collet with Lubriplate® to assure proper jaw alignment.
- Replace worn components.

WARRANTY

Seller warrants the goods conform to applicable specifications and drawings and will be manufactured and inspected according to generally accepted practices of companies manufacturing industrial or aerospace fasteners. In the event of any breach of the foregoing warranty, Buyer's sole remedy shall be to return defective goods (after receiving authorization from Seller) for replacement or refund of the purchase price, at the Seller's option. Seller agrees to any freight costs in connection with the return of any defective goods, but any costs relating to removal of the defective or nonconforming goods or installation of replacement goods shall be Buyer's responsibility. SELLER'S WARRANTY DOES NOT APPLY WHEN ANY PHYSICAL OR CHEMICAL CHANGE IN THE FORM OF THE PRODUCT IS MADE BY BUYER.

THE FOREGOING EXPRESS WARRANTY AND REMEDY ARE EXCLUSIVE AND ARE IN LIEU OF ALL OTHER WARRANTIES AND REMEDIES; ANY IMPLIED WARRANTY AS TO QUALITY, FITNESS FOR PURPOSE, OR MERCHANTABILITY IS HEREBY SPECIFICALLY DISCLAIMED AND EXCLUDED BY SELLER. THIS WARRANTY IS VOID IF SELLER IS NOT NOTIFIED IN WRITING OF ANY REJECTION OF THE GOODS WITHIN ONE (1) YEAR AFTER INITIAL USE BY BUYER OF ANY POWER RIVETER OR NINETY (90) DAYS AFTER INITIAL USE OF ANY OTHER PRODUCT.

Seller shall not be liable under any circumstances for incidental, special or consequential damages arising in whole or in part from any breach by Seller, AND SUCH INCIDENTAL, SPECIAL, OR CONSEQUENTIAL DAMAGES ARE HEREBY EXPRESSLY EXCLUDED.

For more information please contact our Technical Services Department at Tel. 714-850-6022

LOCTITE® is a registered trademark of Henkel Corporation
LUBRIPATE® is a trademark of Fiske Brothers Refining Co.

USATCO U.S. Air Tool Company, Inc.

Eastern Division60 Fleetwood Ct., Ronkonkoma, NY 11779-6907 tel: (631) 471-3300 fax: (631) 471-3308

Western Division1219 W. Mahalo Place, Rancho Dominguez, CA 90220-5446 tel: (310) 632-5400 fax: (310) 632-3900

Info@usatco.com