

H743 A

Pulling Head

INSTRUCTION SHEET, Page 1 of 2



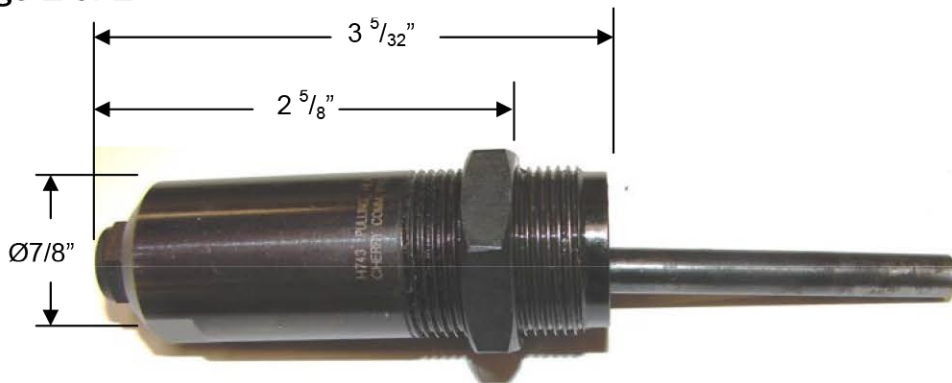
CHERRY®
AEROSPACE

DIMENSIONAL DATA

(see figure on the right)

RIVET SIZE CAPABILITY

The H743A Pulling Head is capable of installing commercial rivets with mandrel diameters from .100 to .170".



CHOICE OF RIVETERS

The H743A Pulling Head fits directly on the G-703, G-743, G-780 and G-745 Cherry® Commercial Riveters. When used with the G-745, the pulling head must be equipped with 745A31 Ejector Tube.

OPERATING INSTRUCTIONS

Before using this pulling head, make sure that:

- Pulling Head is correctly mounted on the proper riveter
- Proper Air source is connected (see Riveter specification for recommended pressure).
- Make sure that the proper Nosepiece is used and that it is in good working condition. Use the "Nosepiece Selection Table" as a guide.

Nosepiece Selection Table

| Pulling Head Number | Nosepiece Part No | Commercial rivet type | | | | | | | |
|---------------------|-------------------|-----------------------|---------|---------|-----------|---------|---------|-----------|-----------|
| | | Rivet Diameter | N Rivet | Q Rivet | C-M Rivet | T Rivet | G Rivet | K-T Rivet | Mono-Bolt |
| H743A-5C6Z | 743A7-5C6Z | 3/16" | ALL | ALL | -- | -- | -- | -- | -- |
| H743A-6K | 743C53 | | -- | -- | -- | -- | -- | ALL | -- |
| H743A-6T | 703A25-6T | | -- | -- | -- | BSPT | -- | -- | -- |
| H743A-6V | 743B35 | | -- | -- | -- | -- | ALL | -- | ALL |
| H743A-8Z | 743A7-8Z | 1/4" | ALL | ALL | -- | -- | -- | -- | -- |
| H743A-8T | 743A25-8T | | -- | -- | -- | BSPT | -- | -- | -- |
| H743A-8V | 743B32 | | -- | -- | -- | -- | -- | ALL | ALL |
| H743A-8K | 743C51 | | -- | -- | -- | -- | -- | ALL | -- |

USATCO U.S. Air Tool Company, Inc.

Info@usatco.com

Eastern Division60 Fleetwood Ct., Ronkonkoma, NY 11779-6907 tel: (631) 471-3300 fax: (631) 471-3308

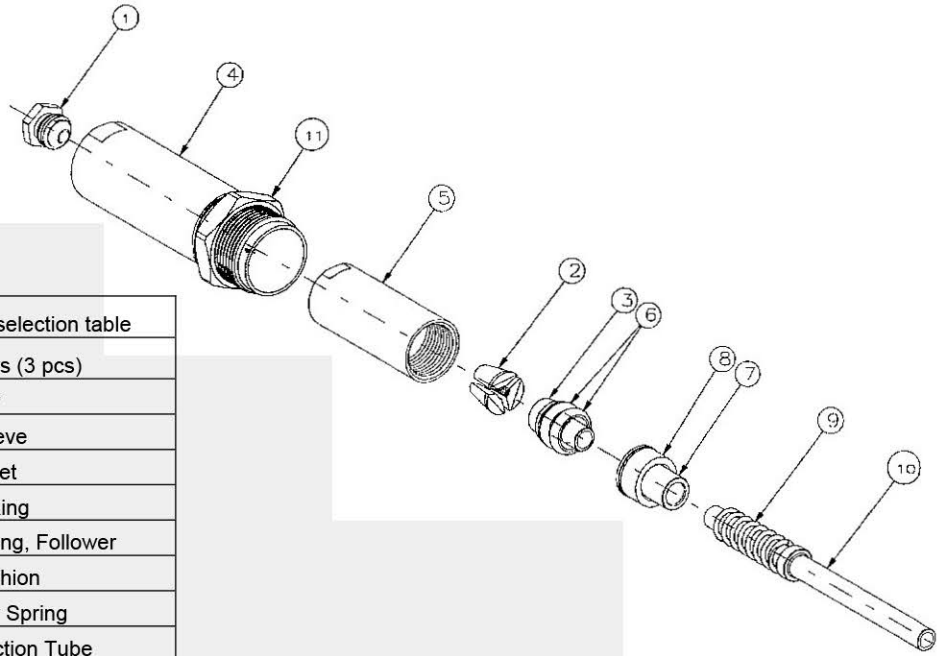
Western Division1219 W. Mahalo Place, Rancho Dominguez, CA 90220-5446 tel: (310) 632-5400 fax: (310) 632-3900

H743 A Pulling Head

INSTRUCTION SHEET, Page 2 of 2



CHERRY[®]
AEROSPACE



PARTS LIST

| | | | | |
|---|----|-----|-------------------------------|------------------|
| These parts are common to all the pulling head part numbers | 1 | 1 | See nosepiece selection table | |
| | 2 | set | 743C55 | Jaws (3 pcs) |
| | 3 | 1 | 743B93 | Jaw |
| | 4 | 1 | 743B91 | Sleeve |
| | 5 | 1 | 743B92 | Collet |
| | 6 | 2 | P-1195 | O-Ring |
| | 7 | 1 | 743B94 | Spring, Follower |
| | 8 | 1 | 743A95 | Cushion |
| | 9 | 1 | 732A8 | Jaw Spring |
| | 10 | 1 | 743A14-8Z | Ejection Tube |
| | 11 | 1 | 743A18 | Jam Nut |

MOUNTING INSTRUCTIONS

1. Connect tool to air supply and, without depressing trigger, place spring (9) over tube (10) as shown and insert as far as possible in head piston.
2. Place jaws (2) inside collet (5). Place 2 O-rings (6) over jaw follower (3) and cushion (8) over spring follower (7). Assemble jaw follower (3) and spring follower (7) and insert into collet (5). Screw this assembly onto head piston, making sure tapered end of jaw follower (3) is properly aligned in bevel in back end of jaws (2).

3. Thread nosepiece (1) completely into sleeve (4) and place this assembly over the collet and jaw assembly. Screw sleeve (4) into the end of the head body while depressing trigger and tighten snugly. Tighten jam-nut (11) securely.
4. These pulling heads will give long life if properly maintained. This includes keeping the head clean and dry and all the parts securely tightened. The only lubrication required is a little Lubriplate[®] inside the cone of the collet to assure a sliding action against the back of the jaws.

WARRANTY

Seller warrants the goods conform to applicable specifications and drawings and will be manufactured and inspected according to generally accepted practices of companies manufacturing industrial or aerospace fasteners. In the event of any breach of the foregoing warranty, Buyer's sole remedy shall be to return defective goods (after receiving authorization from Seller) for replacement or refund of the purchase price, at the Seller's option. Seller agrees to any freight costs in connection with the return of any defective goods, but any costs relating to removal of the defective or nonconforming goods or installation of replacement goods shall be Buyer's responsibility. SELLER'S WARRANTY DOES NOT APPLY WHEN ANY PHYSICAL OR CHEMICAL CHANGE IN THE FORM OF THE PRODUCT IS MADE BY BUYER. THE FOREGOING EXPRESS WARRANTY AND REMEDY ARE EXCLUSIVE AND ARE IN LIEU OF ALL OTHER WARRANTIES AND REMEDIES; ANY IMPLIED WARRANTY AS TO QUALITY, FITNESS FOR PURPOSE, OR MERCHANTABILITY IS HEREBY SPECIFICALLY DISCLAIMED AND EXCLUDED BY SELLER. This warranty is void if seller is not notified in writing of any rejection of the goods within ninety (90) days after receipt of the goods by buyer.

Seller shall not be liable under any circumstances for incidental, special or consequential damages arising in whole or in part from any breach by Seller, AND SUCH INCIDENTAL, SPECIAL, OR CONSEQUENTIAL DAMAGES ARE HEREBY EXPRESSLY EXCLUDED.

Our policy is one of continuous development. Specifications shown in this document may be subject to changes introduced after publication.

NOTE: The properties, strength, dimensions, installed characteristics and all other information in these materials are for guidance only to aid in the correct selection of the products described herein and is not intended or implied as part of the above warranty. All applications should be evaluated for functional stability and available samples of the described parts can be requested for installed tests, suitability and evaluations.

For more information please contact our Technical Services Department at tel. 714-850-6022

LOCTITE[®] is a registered trademark of Henkel Corporation
LUBRIPLATE[®] is a registered trademark of Fiske Brothers Refining Co.

USATCO U.S. Air Tool Company, Inc.

Eastern Division60 Fleetwood Ct., Ronkonkoma, NY 11779-6907 tel: (631) 471-3300 fax: (631) 471-3308

Western Division1219 W. Mahalo Place, Rancho Dominguez, CA 90220-5446 tel: (310) 632-5400 fax: (310) 632-3900

Info@usatco.com