

H781A-456



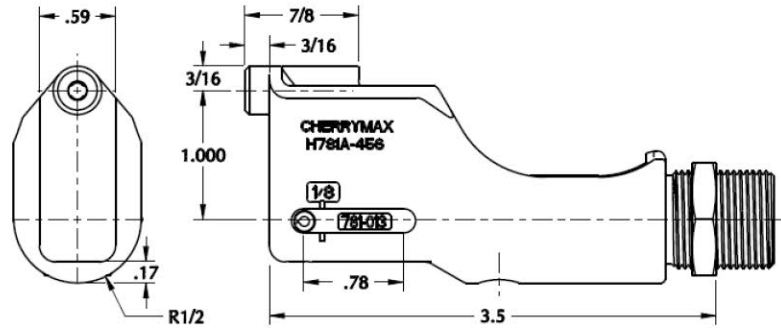
Compact Single Jaw Offset Pulling Head

INSTRUCTION SHEET, Page 1 of 2

DIMENSIONAL DATA

Weight: 0.5 lbs.

Dimensional data: see Figure 1



INTENDED USE

- CherryMAX Bulb & "AB" -4, -5 & -6 diameters
- Maxibolt "S" type -04 & -05 diameters
- Cherry 1900 "U" type -04 & -05 diameters
- MBC Lock Creator -4, -5 & -6 diameters

CHOICE OF RIVETERS

- G746A, G747, G704B, G704B-40SH, G704B-SR, G800
- Extensions available: 704A12-2, 704A12-4, 704A12-6 & 704A12-12" (for 2", 4", 6" and 12" respectively)

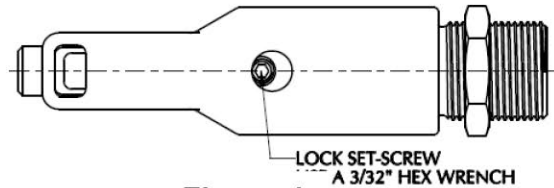


Figure 1

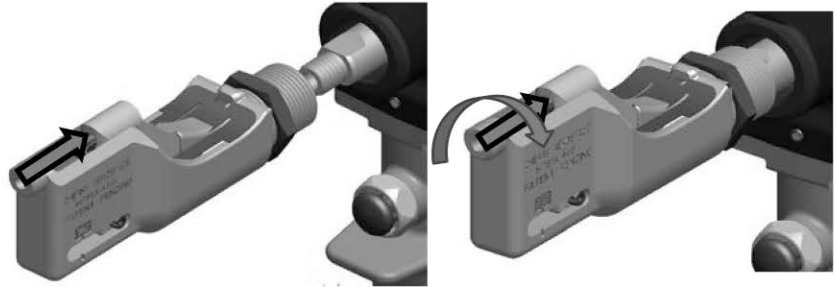
ADAPTERS

RIVETER	ADAPTER NEEDED
G83A, G84	744-300
G84-LS	744-600
G700, G784	680B205
G740	740A26
G744	744A20

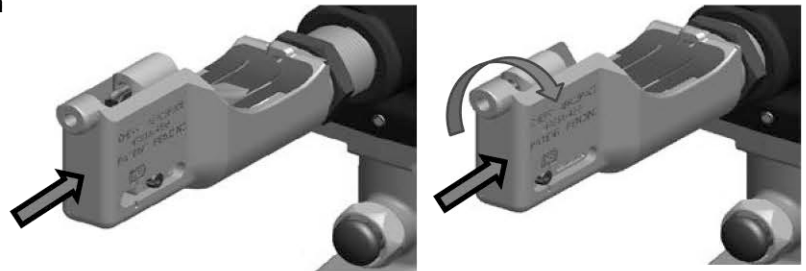
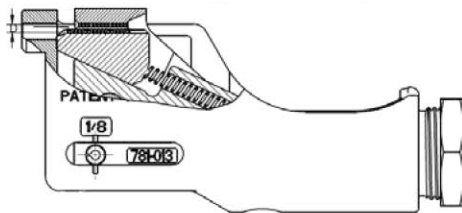
MOUNTING INSTRUCTIONS

- **CAUTION: Make sure that the Set-Screw (item 2) is tightened and the riveter is attached to an air source.**

1. Push the Drawbar assembly towards the riveter and thread all the way into the riveter piston (rotate clockwise)



2. Push the Frame (1) towards the riveter and thread it in (rotate clockwise). When the roll pin (13) aligns with the 1/8" mark on the elongate slot of the frame, the tool is set for installing the smallest (-4 diameter) fasteners.



3. To open the jaw more (for -5 and -6 diameters) thread the frame all the way in; make sure you adjust to the desired angular position before locking the pulling head with the jam nut.

USATCO U.S. Air Tool Company, Inc.

Eastern Division60 Fleetwood Ct., Ronkonkoma, NY 11779-6907 tel: (631) 471-3300 fax: (631) 471-3308
Western Division1219 W. Mahalo Place, Rancho Dominguez, CA 90220-5446 tel: (310) 632-5400 fax: (310) 632-3900

Info@usatco.com

H781A-456

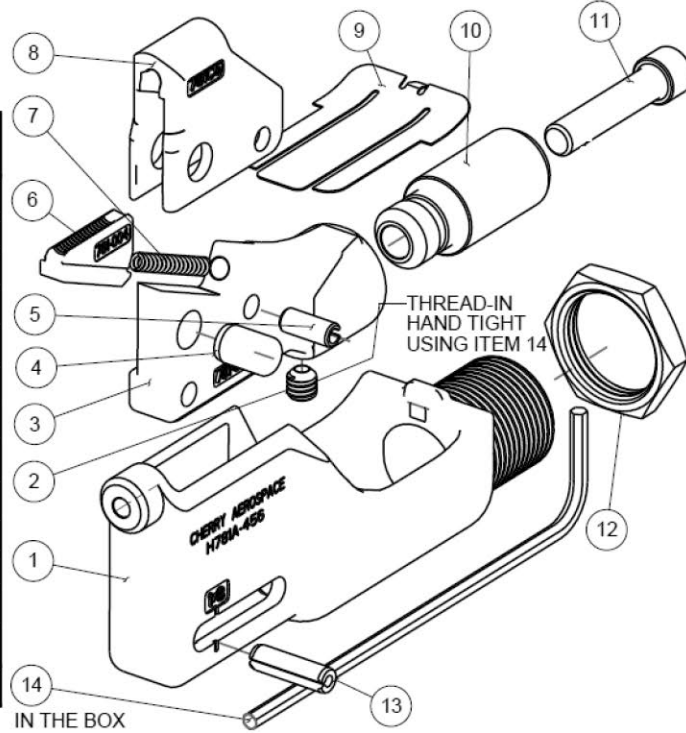


Compact Single Jaw Offset Pulling Head

INSTRUCTION SHEET, Page 2 of 2

PARTS LIST

ITEM NO	PART NUMBER	DESCRIPTION	QTY
1	781-012	MACHINED FRAME	1
2	P596	SET SCREW	1
3	781-013	DRAWBAR	1
4	P1503	DOWEL PIN	1
5	P1257	ROLL PIN	1
6	781-004	JAW	1
7	P1135	COMPRESSION SPRING	1
8	781-005 (781C5)	SADDLE	1
9	783-057	GUARD	1
10	781-014	SWIVEL ADAPTER	1
11	P1504	CAP SCREW	1
12	671A16	JAM NUT	1
13	P1012	ROLL PIN	1
14	P1507	3/32 HEX WRENCH	1

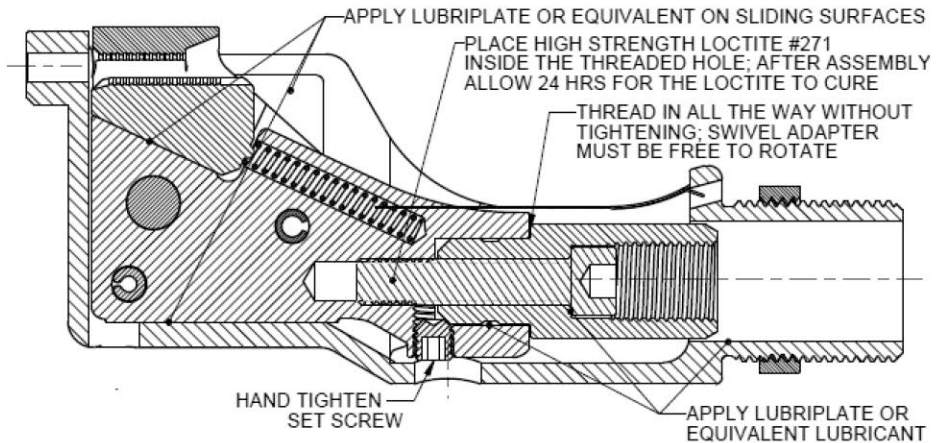


PREVENTATIVE MAINTENANCE

- Inspect regularly, keep active area clean and in good working condition.
- Lubricate all moving parts with *Lubriplate*® or similar light grease.
- After 1000 installations or when a failure occurs, service as following:
 - Clean and inspect front surface of the tool
 - Clean the Jaw, Compression Spring and Saddle Jaw (items 6, 7 & 8) thoroughly, replace if worn.
 - Apply Lubriplate or an equivalent lubricant on all the moving surfaces.

ASSEMBLY INSTRUCTIONS

- See cross section on the right.



LUBRIPLATE® is a registered trademark of the Fiske Brothers Refining Co.
LOCTITE® is a registered trademark of the LOCTITE Corporation

WARRANTY

Seller warrants the goods conform to applicable specifications and drawings and will be manufactured and inspected according to generally accepted practices of companies manufacturing industrial or aerospace fasteners. In the event of any breach of the foregoing warranty, Buyer's sole remedy shall be to return defective goods (after receiving authorization from Seller) for replacement or refund of the purchase price, at the Seller's option. Seller agrees to any freight costs in connection with the return of any defective goods, but any costs relating to removal of the defective or nonconforming goods or installation of replacement goods shall be Buyer's responsibility. SELLER'S WARRANTY DOES NOT APPLY WHEN ANY PHYSICAL OR CHEMICAL CHANGE IN THE FORM OF THE PRODUCT IS MADE BY BUYER. THE FOREGOING EXPRESS WARRANTY AND REMEDY ARE EXCLUSIVE AND ARE IN LIEU OF ALL OTHER WARRANTIES AND REMEDIES; ANY IMPLIED WARRANTY AS TO QUALITY, FITNESS FOR PURPOSE, OR MERCHANTABILITY IS HEREBY SPECIFICALLY DISCLAIMED AND EXCLUDED BY SELLER. This warranty is void if seller is not notified in writing of any rejection of the goods within ninety (90) days after receipt of the goods by buyer. Seller shall not be liable under any circumstances for incidental, special or consequential damages arising in whole or in part from any breach by Seller, AND SUCH INCIDENTAL, SPECIAL, OR CONSEQUENTIAL DAMAGES ARE HEREBY EXPRESSLY EXCLUDED.

Our policy is one of continuous development. Specifications shown in this document may be subject to changes introduced after publication.

NOTE: The properties, strength, dimensions, installed characteristics and all other information in these materials are for guidance only to aid in the correct selection of the products described herein and is not intended or implied as part of the above warranty. All applications should be evaluated for functional stability and available samples of the described parts can be requested for installed tests, suitability and evaluations.

For more information please contact our Technical Services Department at tel. 714-850-6022

USATCO U.S. Air Tool Company, Inc.

Info@usatco.com

Eastern Division60 Fleetwood Ct., Ronkonkoma, NY 11779-6907 tel: (631) 471-3300 fax: (631) 471-3308

Western Division1219 W. Mahalo Place, Rancho Dominguez, CA 90220-5446 tel: (310) 632-5400 fax: (310) 632-3900