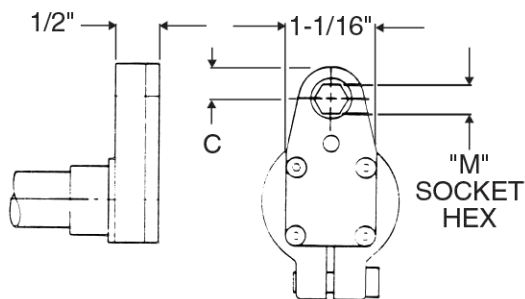
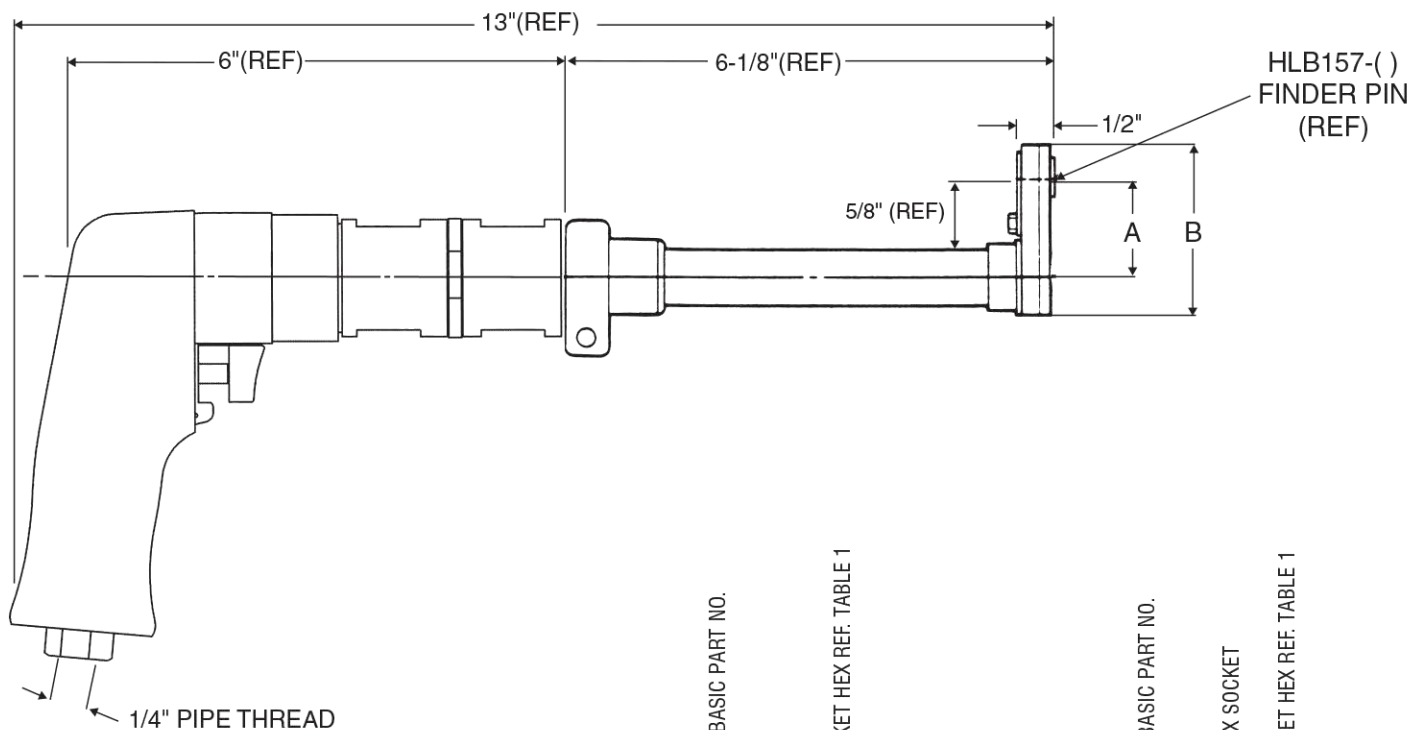


# INSTALLATION TOOLING SUPER HLA1071

1 Inch Offset Driver Assembly  
with Interference Fit Flush Socket



HLG115H OFFSET ADAPTOR ASSY W/THRU-HEX SOCKET  
(Finder pin & leaf spring not included)



### ORDERING INFORMATION

- Determine collar driving hex dimensions of the fasteners to be installed.
- See table 1 for 'M' socket hex to match collar driving hex dimensions. Determine complete tool assembly part no. (Example 1).
- See table 2 for complete tool assembly part nos. to obtain an Offset Adaptor Assembly featuring a thru-hex socket, less finder pin and leaf spring.
- See example 2.



Example 1: complete driver assy. Example 2: complete driver assy. part no. w/ thru-hex socket

### TECHNICAL DATA

Operating Pressure .....	90 PSIA	Horsepower Rating .....	0.70
<b>MAX. TORQUE RATING</b> .....	300 in. lb	Air Consumption .....	22 scfm
(Motor)	@90 PSIA	Weight .....	3.8 lb
Socket Speed .....	250 RPM		

TABLE 1

TABLE 2

COLLAR Hex Size	A C to C	B OVERALL	C EDGE DISTANCE	TABLE 1			TABLE 2			
				"M" SOCKET HEX (Matches Collar Driving Hex)	COMPLETE TOOL ASSY. PART NO.	OFFSET ADAPTOR ASSY. PART NO. (REF.)	OFFSET ADAPTOR ASSY. PART NO. (REF.)	"M" SOCKET HEX (Matches Collar Driving Hex)	COMPLETE TOOL ASSY. PART NO.	OFFSET ADAPTOR ASSY. PART NO. (REF.)
up to 3/8	1.375	2.330	0.431	5/16	HLA1071-312	HLG115-312	HLB157-312	5/16	HLA1071H-312	HLG115H-312
7/16 and up	1.420	2.450	0.500	11/32	HLA1071-343	HLG115-343	HLB157-343	11/32	HLA1071H-343	HLG115H-343
				3/8	HLA1071-375	HLG115-375	HLB157-375	3/8	HLA1071H-375	HLG115H-375
				7/16	HLA1071-437	HLG115-437	HLB157-437	7/16	HLA1071H-437	HLG115H-437

USATCO U.S. Air Tool Company, Inc.

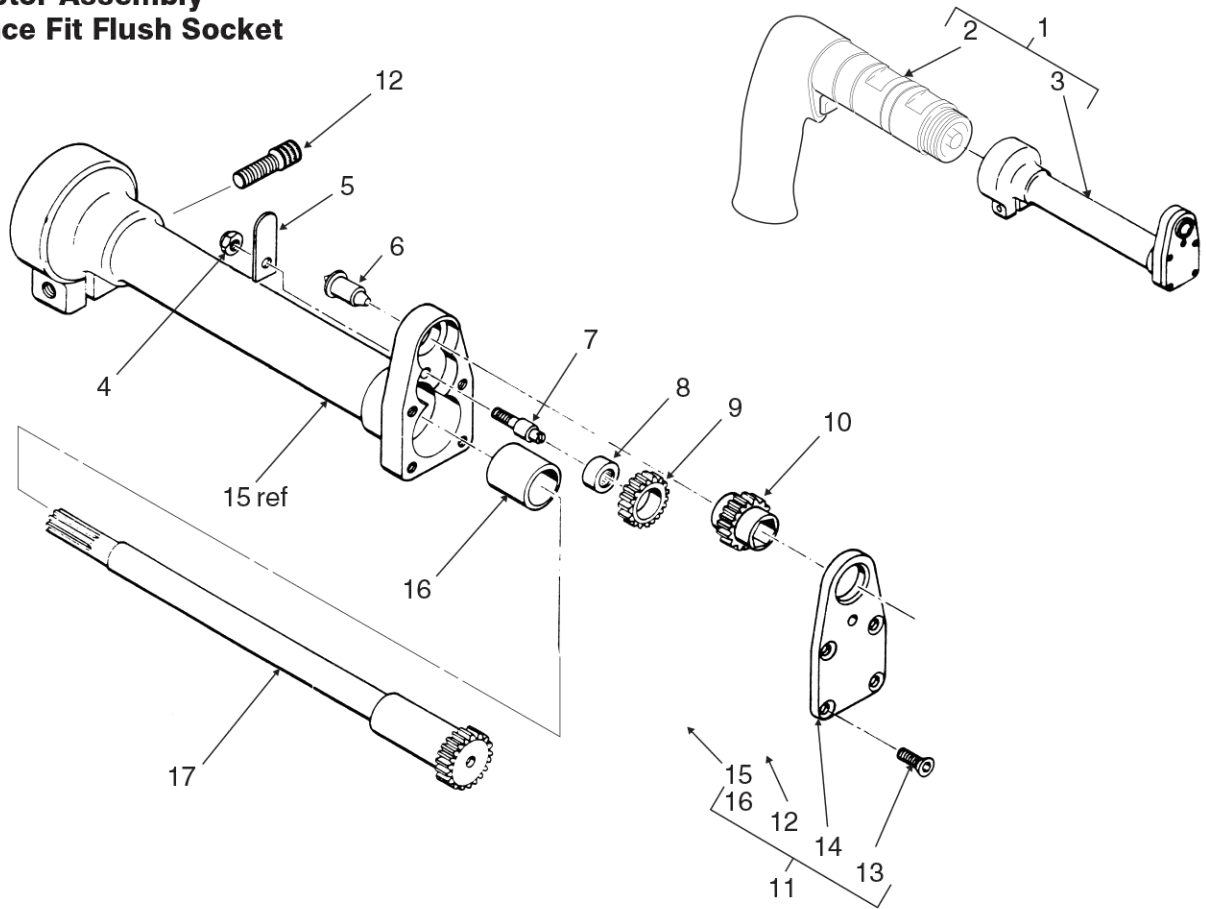
Info@usatco.com

Eastern Division .....60 Fleetwood Ct., Ronkonkoma, NY 11779-6907 tel: (631) 471-3300 fax: (631) 471-3308

Western Division .....1219 W. Mahalo Place, Rancho Dominguez, CA 90220-5446 tel: (310) 632-5400 fax: (310) 632-3900

# HLG115

## 1" Offset Adaptor Assembly with Interference Fit Flush Socket



ITEM	PART NO.	DESCRIPTION	QTY	QTY
			HLB167 SERIES	HLB167H SERIES THRU-HEX SOCKET
1	HLA1071-( )	Tool assy., complete	1	
1	HLA1071H-( )	Tool assy., complete		1
2	HLB1174-003	. Air motor assy.	1	1
3	HLG115-( )	. Offset adaptor assy.	1	
3	HLG115H-( )	. Offset adaptor assy.		1
4	AN364-632C	.. Nut, hex	1	
5	HLB162-8	.. Spring, leaf	1	
6	HLB157-( )	.. Pin, finder	1	
7	HLB105	.. Shaft, intermediate	1	1
8	B34	.. Bearing (Torrington)	1	1
9	HLB106-7	.. Gear, intermediate	1	
10	HLB167-( ) Table 3 (-11 for .437 socket)	.. Gear, socket	2	
10	HLB167H-( ) Table 4 (-11 for .437 socket)	.. Gear, socket		1
12	1/4-28 x 5/8 lg.	... Capscrew, socket head	1	1
13	6/32 x 3/8 lg.	... Screw, countersunk - 82o	4	4
14	HLB171 (HLB172 for .437 socket)	... Cover plate	1	1
15	HLB168-5 (-11 for .437 socket)	... Housing assy.	1	1
16	B810-5	... Bushing (Boston Gear)	1	1
17	HLB103-5	.. Gear, drive	1	1

TABLE 3 SOCKET GEAR	
HEX SIZE (Matches Collar Driving Hex)	PART NO.
5/16	HLB167-312
11/32	HLB167-343
3/8	HLB167-375
7/16	HLB167-437

TABLE 4 SOCKET	
HEX SIZE (Matches Collar Driving Hex)	PART NO.
5/16	HLB167H-312
11/32	HLB167H-343
3/8	HLB167H-375
7/16	HLB167H-437

USATCO U.S. Air Tool Company, Inc.

Info@usatco.com

Eastern Division .....60 Fleetwood Ct., Ronkonkoma, NY 11779-6907 tel: (631) 471-3300 fax: (631) 471-3308  
 Western Division .....1219 W. Mahalo Place, Rancho Dominguez, CA 90220-5446 tel: (310) 632-5400 fax: (310) 632-3900